



Comhairle Contae Chorcaí
Cork County Council

GLAN AGUA



Castletownshend Sewerage Scheme

Project Information Event
June 2022



Castletownshend Sewerage Scheme

GLAN AGUA

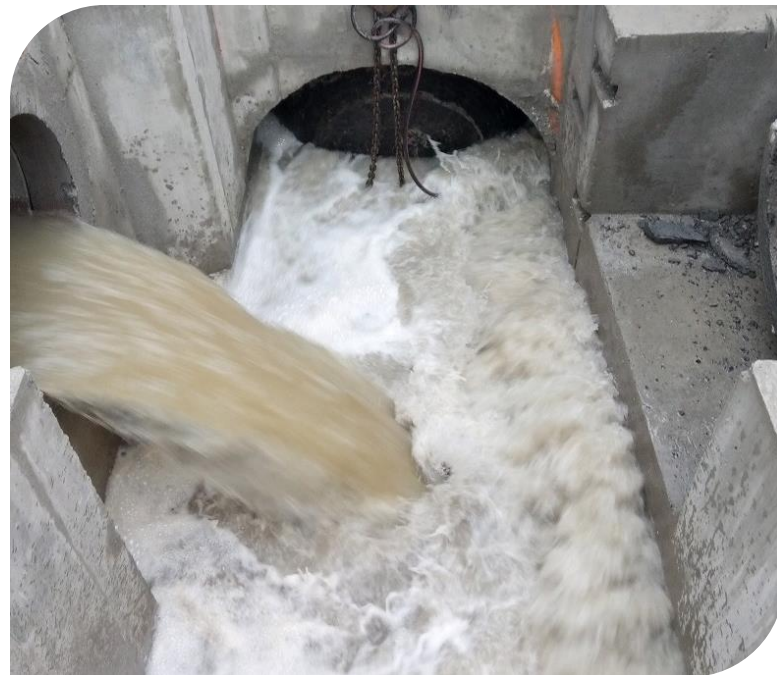


Working in partnership with Cork County Council, mobilisation on the Castletownshend Sewerage Scheme will commence in late July/early August.

This project involves the construction of a new wastewater treatment plant and sewerage infrastructure.

This project will eliminate the discharge of untreated wastewater into Castlehaven Harbour.

It is being delivered by Glan Agua on behalf of Irish Water.



Problem Being Solved

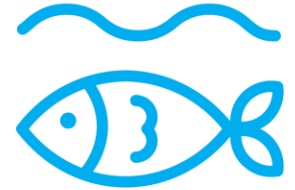
- Currently, untreated sewage is being discharged into Castlehaven Harbour.
- This practice is unacceptable and is not in compliance with EU Urban Waste Water Treatment Directive.
- The Castletownshend Sewerage Scheme project will eliminate the discharge of 400 wheelie bins of raw sewage per day being discharged into Castlehaven Harbour



Benefits of the Project

The new wastewater treatment plant will bring benefits to Castletownshend including:

- Improved water quality in Castlehaven Harbour.
- Protection of recreational waters for swimming, rowing, sailing and sightseeing.
- Better health and integrity of the environment.
- Cleaner water will enhance local amenities and a platform for social and economic development.
- New wastewater treatment plant, sewer pipes and pumping stations sized to accommodate future population growth.
- Ensure compliance with national and EU regulations relating to the treatment of wastewater.



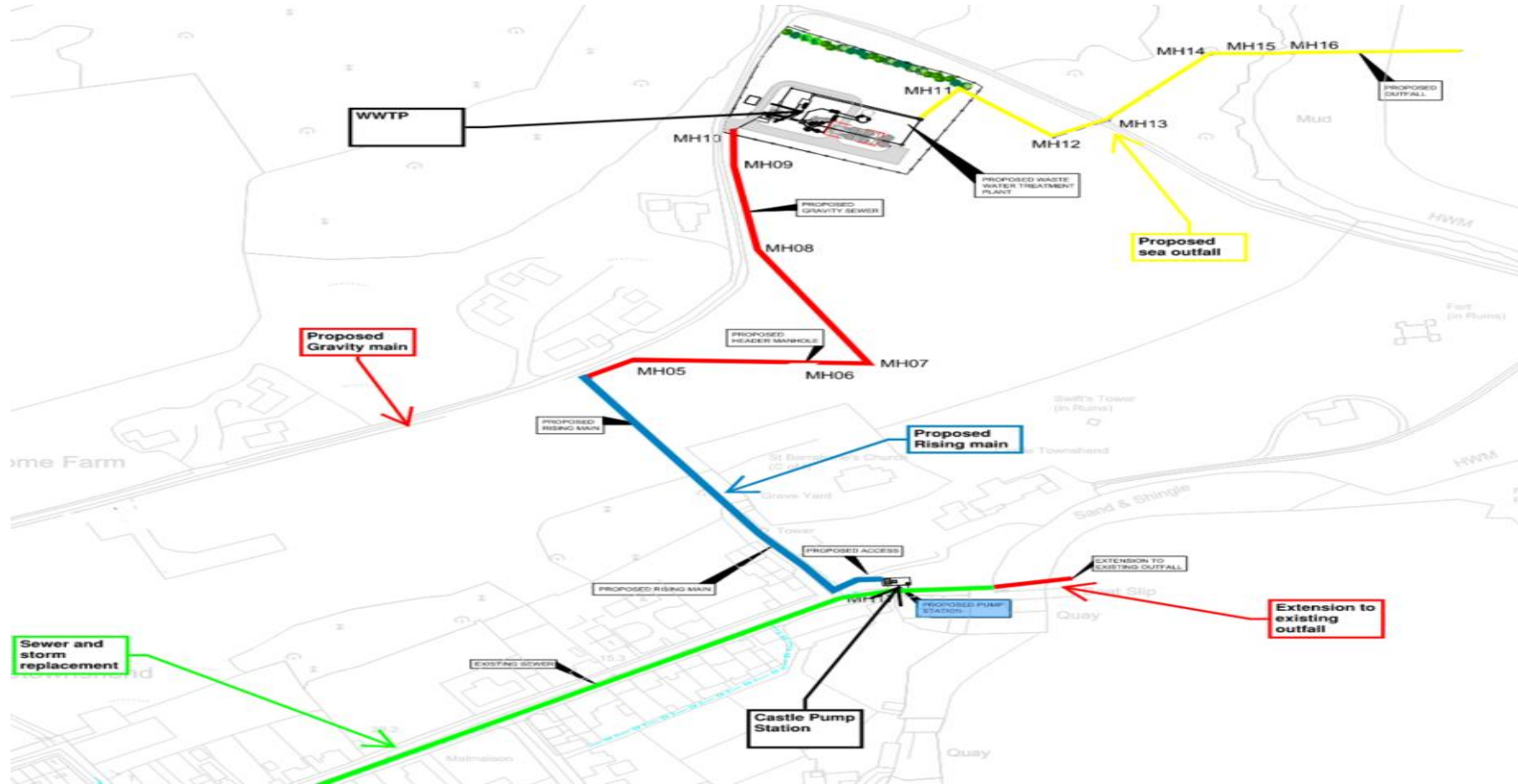
What is involved in the project?

- A new wastewater treatment plant in the north-east of the town, which will serve a population equivalent of 531.
- Construction of a new pumping station.
- Upgrading of the existing main street sewer network.
- 500m of new pipes to separate storm water from wastewater.
- 325m new gravity pipe to bring untreated wastewater to the WWTP.
- Conversion and extension of existing outfall into new storm water overflow at the quays.
- Construction of new and separate 290m outfall from WWTP.



The works are due to commence in late July/early August and complete in Q1 2024.

Location of Project Works



Traffic Management Plan

Road Closure required for approx. 4 week to accommodate works adjacent to the pier.
Works currently scheduled to start in November.





Castletownshend Sewerage Scheme

FREQUENTLY ASKED QUESTIONS (FAQs)

Will traffic be a problem in the area during the construction?

- Our aim will be to minimise the impact on traffic in Castletownshend during construction of the scheme. However, pipelaying in the village will cause disruption and this will be managed by careful traffic management planning and by clear communication with residents and businesses affected.
- A traffic management plan (TMP) has been prepared in collaboration with Cork County Council. All works will be programmed in the least disruptive way, particularly during the busy tourist seasons.
- Advanced traffic management warning signage will be in place.
- Local and emergency access will always be maintained.

Will the construction and operation of project generate any odours?

- The management of odours in the sewer, pumping stations and WWTP has been taken into account as part of detailed project design. Odour treatment units and ventilation systems will be installed to ensure that the infrastructure does not generate any malodours or nuisance.

Castletownshend Sewerage Scheme

How will noise issues be managed during construction?

- To minimise noise, construction works will be undertaken:
 - Monday to Friday 7.00am to 7.00pm.
 - Saturday 8:00am to 4:30pm.
 - No operation on Sundays or Bank Holidays.
- Any works that take place outside these hours, will require advance permission from Irish Water.
- Fencing will be put in place around the construction of pumping station and WWTP.
- Noise suppression equipment will be utilised for machinery where possible.

How will dust issues be managed during construction?

- Hard surface roads shall be regularly cleaned and maintained as appropriate to remove mud and aggregate materials.
- Dampening down / spraying shall be used as required
- Stockpiling of materials shall be designed and laid out to minimise exposure to wind.

Castletownshend Sewerage Scheme

GLAN AGUA



Will this project impact the marine environment, local beaches and fishing?

- This project will end the practice of raw sewage being discharged to the marine environment. It will improve water quality, protect public health and lead to a more enjoyable environment for local communities while enhancing the amenity value of the local area.

How can I connect into the new sewerage scheme?

- Any person or business wishing to get a new connection to public wastewater collection infrastructure must contact Irish Water. You can make a pre-connection enquiry in order to establish the feasibility of a connection to the Irish Water network. Pre-connection enquiry is a free service which allows you to find out whether a connection to the public network is possible or not. For more information visit <https://www.water.ie/connections/>

- We are engaging with all impacted stakeholders and residents in advance of the works.
- **Virtual information events** to community groups and elected representatives.
- **Letter drops** to all impacted businesses and residents throughout the works.
- **Updates** will be provided to elected representatives and stakeholders as the project progresses.
- **Website & Social Media.** Regular updates will also be provided on our website [project page](#) and via our social media channels.
- **Contractor (Glan Agua) Project Team** is available to address any queries or concerns in relation to the works. The on-site project manager can be contacted via email: castletownshend.project@glanagua.com

Castletownshend Sewerage Scheme

- Thank you for your support and patience as we delivery this essential project
- We are happy to answer any questions in relation to the project.

