

Cork Lower Harbour Main Drainage Project

Cobh Networks – R624 Road Closure

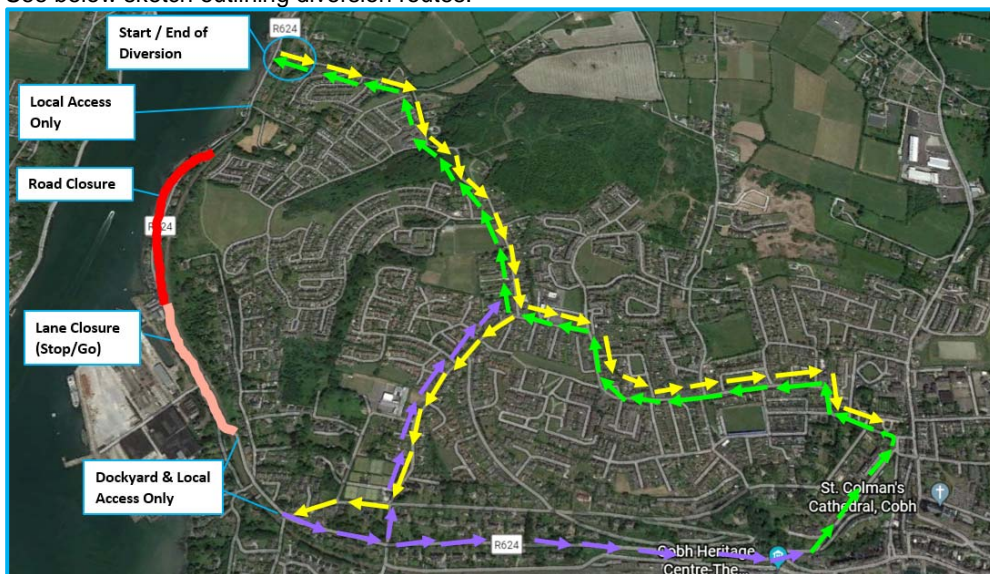
1. Why is the road closure necessary?

The road closure is necessary to facilitate the installation of approximately 425m of 225mm foul sewer, 14 manholes and 150m of rising main. The works require the excavation of a trench approximately 0.8m in width, requiring an excess of 3m width working area on the road. As some parts of the R624 are less than 6m in width, it is necessary to close this section of the road.

For areas of the road where the road is greater than 7m in width, a lane closure will be in place with Stop/Go traffic management.

2. What diversions are in place?

See below sketch outlining diversion routes.



Inbound traffic:

- Ballynoe Road – Newtown Park – Norwood Park – Lake Road – High Road. Traffic to the town centre is diverted left at the end of Newtown Park.

Outbound traffic:

- High Road – Norwood Park – Newtown Road – Ballynoe Road – R624.
- Alternatively, traffic can use the following route: High Road – Spy Hill – Park Lane – Cloyne Terrace – Peter O'Donovan Place – Newtown Road – Ballynoe Road – R624

3. How long will the works take to complete?

We anticipate that the works will take 6 weeks to complete, from **Monday 14 October 2019 to Monday 25 November 2019**.

4. What are the working hours?

Monday to Friday, 8AM to 6PM.

Saturdays 7:30AM to 1PM.

5. Will the road remain closed at the weekends when there is no construction activity?

Yes, the road will remain closed at the weekends for public safety.

6. Will there be pedestrian access within the road closure area?

Yes, footpaths will remain open with full pedestrian access maintained throughout the duration of the works.

7. Will the works be noisy?

There will be general construction noise associated with these works, carried out during the day Monday to Friday, and in keeping with licensing conditions.

8. Will the works create dust?

Some dust will be created during excavation activities. If necessary, we will use a water bowser for dust suppression.

9. Will the works create any odour?

We do not anticipate any odour as a result of the works.

10. Will the works cause vibration?

Vibration may occur from movement of plant and machinery on the road, and trench protection installation if required. Structural surveys will have been completed on all properties along the road before works commence, to ensure vibrations will not affect the structural integrity of buildings adjacent to the works. We will also monitor vibration levels on an ongoing basis.

If you have yet not contacted Farrans Sorensen Joint Venture (FSJV) to arrange a structural survey of your property, please contact Lucy Peters, Community Liaison officer with FSJV on (086) 852 3203.

11. Will the road be reinstated before the road re-opens?

Yes, road will be fully reinstated before the road re-opens.

12. What safety measures are in place while works are taking place?

The road closure area will be barricaded off with barriers to ensure the area is safely secured, and personnel will be on site at all times during the construction works to ensure the area is safe.

13. What parking restrictions will be in place during the road closure?

There will be no on-street parking available within the road closure area, or along the road next to Cork Dockyard. If we require your vehicle to be relocated, we will communicate with you directly well in advance.

14. Will there be any interruptions to water supply during the road closure?

There is no planned water shut-off during the works.

15. Will there be any interruptions to other utility services during the road closure?

There are no planned disruptions to electricity supply during the works.

16. Will the Emergency Services be able to access my property?

The emergency services will be notified of the road closure, with maps provided allowing them to manage their response should an emergency arise. Emergency services manage road closures on a regular basis. They will include the road closure info into their dispatching protocol, and determine how best to deploy a service, be it an ambulance, fire truck or Garda car. The road closure will not impact the quality of service being provided by the Emergency services.

17. Will schools be notified?

Yes, we will make contact with all schools in Cobh in order to provide them with information for the parents of their students in relation to the road closure and diversion routes.

18. How can I keep up to date with information on the road closure, and on the progress of the Cobh Town Networks project?

You can sign up for project updates by sending an email to CorkLowerHarbour@water.ie, and register for SMS updates by texting **COBH** to **50015**. You can opt out of either service at any time.

Lucy Peters, the Community Liaison Officer with FSJV, can be contacted at (086) 852 3203.

The project team will also be available to discuss the road closure and overall project at the Information Evening in the Commodore Hotel on Thursday 05th September.