

Cork Lower Harbour Main Drainage Project

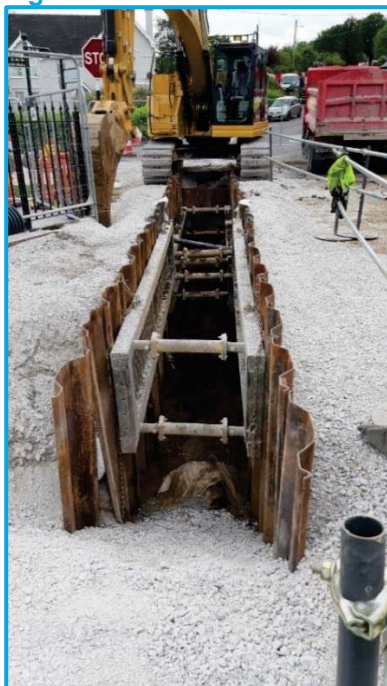
Cobh Networks – West Beach / East Beach Road Closure

1. Why is the road closure necessary?

The road closure is necessary to facilitate the installation of a 1050mm internal diameter foul sewer and construction of 2100mm internal diameter manholes up to 5m in depth, installation of a 400mm internal diameter rising main, construction of associated chambers and construction of a 300mm storm sewer and associated manholes up to 5m in depth, and the installation of ESB ducting.

The works require the excavation of a trench approximately 3m in width, in the centre of the road in order to be near the existing services. See below image of similar works.

Fig 2.



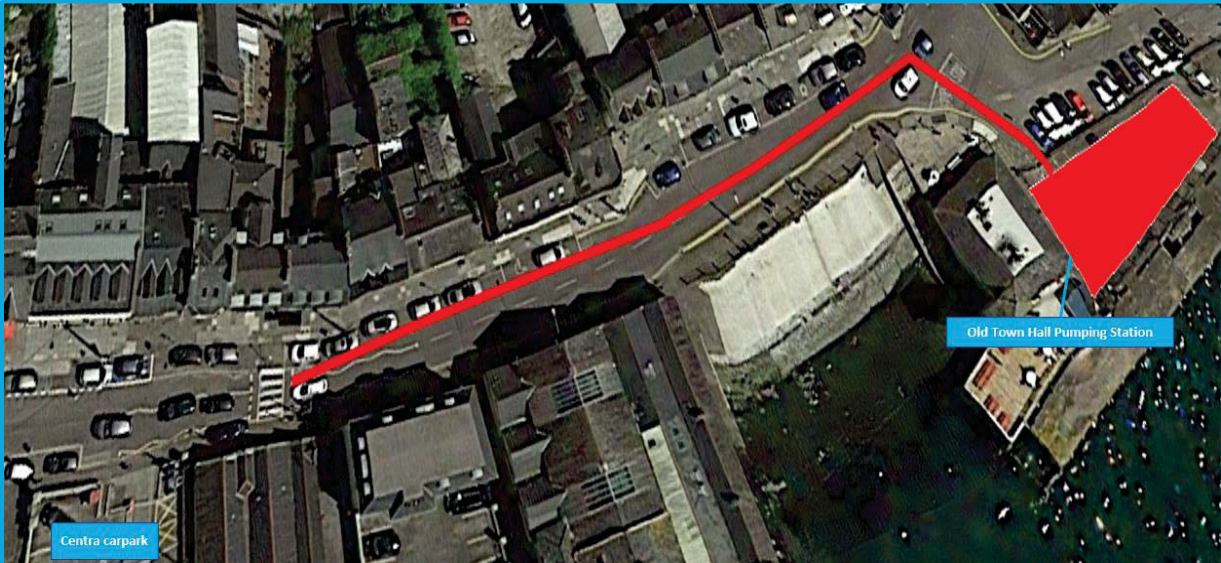
2. How long will the works take to complete?

We anticipate that the works will take 5 months in total to complete, commencing on Monday 28th September 2020. The road will be closed in stages in order to minimise traffic and parking disruptions as much as possible.

Works will be broken into 2 stages:

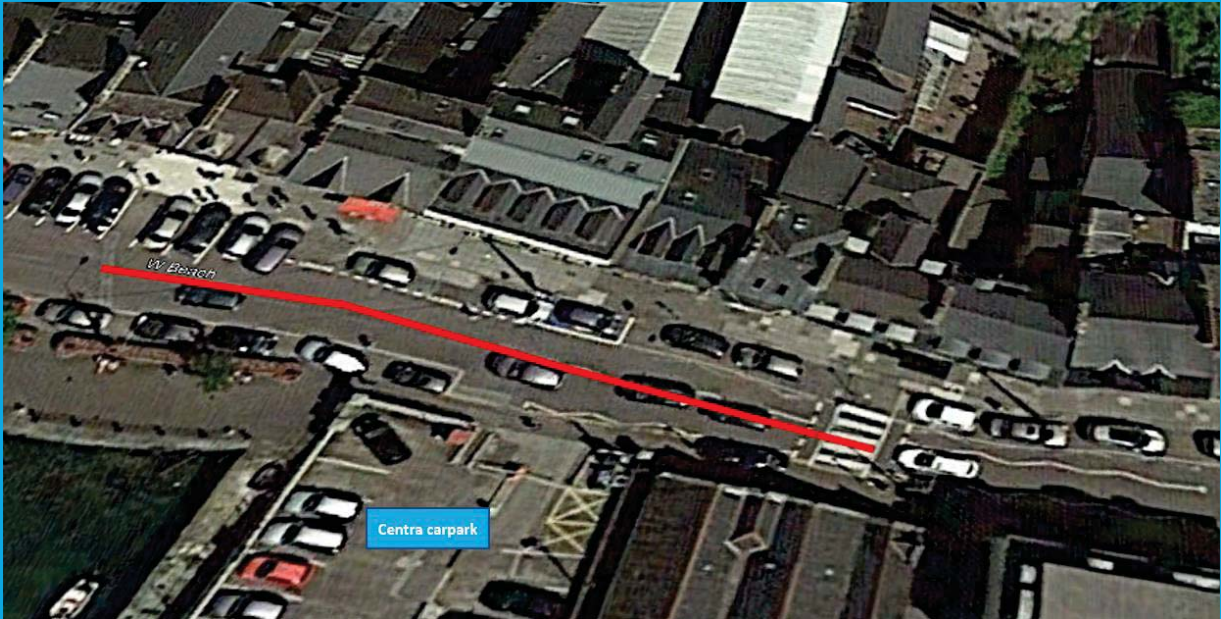
Stage of Works	Planned Dates	Works Location
Stage 1	Monday 28 th September – Friday 18 th December	Old Town Hall to the pedestrian crossing at West Beach (see Fig. 3)
Stage 2	Monday 4 th January – Thursday 28 th February	Pedestrian crossing at West Beach towards Kennedy Pier (see Fig. 4)

Fig 3. Stage 1 of proposed road closure



Imagery © Google, Map data © 2020

Fig 4. Stage 2 of proposed road closure



Imagery © Google, Map data © 2020

3. What are the diversion routes in place during the road closure?

See Fig. 5 below highlighting the planned diversion routes during both stages of the proposed road closure.

Fig 5.



- Road Closed
- Eastbound Traffic Diversion Route
- Westbound Traffic Diversion Route

Imagery © Google, Map data © 2020

4. What are the working hours?

Monday to Friday, 8AM to 6PM, and Saturdays 7:30AM to 1PM where possible. If these working hours change for any reason, we will notify you in advance.

5. Will the road remain closed at the weekends when there is no construction activity?

Yes, the road will remain closed at the weekends for public safety.

6. Will there be pedestrian access within the road closure area?

Yes, footpaths will remain open with full pedestrian access maintained throughout the duration of the works. All shops, restaurants and other commercial premises within the road closure area are open for business will be fully accessible by foot.

7. Will the works be noisy?

There will be general construction noise associated with these works, carried out during the day Monday to Friday, and in keeping with licensing conditions.

8. Will the works create dust?

Some dust will be created during excavation activities. If necessary, we will use a water bowser for dust suppression.

9. Will the works create any odour?

We do not anticipate any odour as a result of the works.

10. Will the works cause vibration?

Vibration may occur from movement of plant and machinery on the road, excavation works, and trench protection installation if required. Structural surveys have been completed on all properties along the road, monitoring equipment has been installed to allow us to ensure that vibration levels are within specified limits as work progresses through stage 1 and stage 2.

11. What safety measures are in place while works are taking place?

During these construction works, the road closure area will be fenced off with barriers to ensure the area is safely secured, and personnel will be on site to ensure the area is safe as works progress through stage 1 and stage 2.

As noted in 10 above, monitoring equipment has been installed at several locations in the vicinity of the works to ensure that vibration levels are within specified limits as work progresses through stage 1 and stage 2.

One property, adjacent to our works in the West Beach/East Beach area, has been designated a Dangerous Structure by Cork County Council. To ensure the safety of the public and our site operatives, Farrans Sorensen Joint Venture, in consultation with Cork County Council, plan to erect a frame in front of the building. The frame will be in place while our works are progressing in the area and will be removed following the expected completion of our works in this area in February 2021. Pedestrian access will be maintained around the frame at all times. At certain stages of the works, this may mean crossing the road via a temporary pedestrian crossing.

12. Will the excavated areas be reinstated before the road re-opens?

Yes, the excavated areas will be reinstated before the road re-opens.

13. Will footpaths be accessible?

We will ensure there is pedestrian access at all times. We do not anticipate the need to close footpaths, however if this is required, alternative pedestrian walkways will be made available.

14. Will there be vehicular access to Sirius Wharf during the road closure?

Yes. Vehicular access to Sirius Wharf will be maintained at all times.

15. Will there be any interruptions to water supply during the road closure?

We anticipate that there will be a planned water outage for a few hours on one day during the road closure period. This outage will be planned outside normal business hours to minimise the disruption caused, and you will be notified in writing in advance of the planned date and time of the outage.

16. Will there be any interruptions to other utility services during the road closure?

There are no planned disruptions to electricity supply during the works.

We anticipate a gas supply outage for a period of one day during the road closure period. We will notify you in writing in advance of the planned date and time of the outage.

17. Will the Emergency Services be able to access my property?

The emergency services will be notified of the road closure, with maps provided allowing them to manage their response should an emergency arise. Emergency services manage road closures on a regular basis. They will include the road closure info into their dispatching protocol, and determine how best to deploy a

service, be it an ambulance, fire truck or Garda car. The road closure will not impact the quality of service being provided by the Emergency services.

18. Will schools be notified?

Yes, we will make contact with all schools in Cobh in order to provide them with information for the parents of their students in relation to the road closure and diversion routes.

19. How can I keep up to date with information on the road closure, and on the progress of the Cobh Town Networks project?

You can sign up for project updates by sending an email to CorkLowerHarbour@water.ie, and register for SMS updates by texting **COBH** to **50015**. You can opt out of either service at any time.

Lucy Peters, the Community Liaison Officer with FSJV, can be contacted at (086) 852 3203.

BUSINESSES

1. Will customers be able to access my business?

Yes, they will. Pedestrian access will be maintained at all times during the road closure period. We will erect laminated "Business as Usual" signs of minimum dimension 1m x 1.5m. The signs shall be of a permanent nature for the duration of the construction activity and shall be checked at the beginning and end of each day. This notice shall also be displayed digitally on VMS (Variable Message Sign) boards on approach to Cobh Town Centre.

2. Will deliveries to my business be affected?

We will work with you to ensure all deliveries reach your business as normal. If you have deliveries to your business premises please call Lucy Peters, Community Liaison Officer with Farrans Sorensen Joint Venture on (086) 8523203 to discuss details of your deliveries and we will ensure this is taken into account during the works. The construction team on the ground during the road closure will take a hands-on approach to assisting delivery drivers to ensure that goods arrive safely and on time to business premises.

3. Will refuse collections be affected?

We will contact the refuse collection companies to make them aware of the road closure. The construction team on the ground will pull all bins within the road closure area to an access point at the end of the works to facilitate collection, and will return bins after the refuse is collected.

4. Can the works be completed over longer working hours and overnight to reduce the time required to close the road and therefore the impact to businesses?

To minimise disruption to residents, businesses and visitors to Cobh, particularly in the town centre, works have been planned taking the tourism season into account. Tidal conditions and licensing restrictions do not allow for overnight works.

5. Am I entitled to compensation as a result of these works?

Irish Water is a statutory body carrying out its duties and as such there is no entitlement to compensation for these works. The works completed as part of the Cork Lower Harbour Main Drainage Project is already having major benefits in terms of protecting the environment and the health of local communities. The completion of this project is essential to end the raw discharge from 19 outfalls in Cobh Town, facilitating economic development and commercial growth in the area, providing for a growing population and benefitting businesses in the area.

6. How can I keep up to date with information on the road closure, and on the progress of the Cobh Town Networks project?

You can sign up for project updates by sending an email to CorkLowerHarbour@water.ie, and register for SMS updates by texting **COBH** to **50015**. You can opt out of either service at any time.

Lucy Peters, the Community Liaison Officer with FSJV, can be contacted at (086) 852 3203.