

National Water Resources Plan

Phase 2

Draft Regional Water Resources Plan
South West Region
Statutory Consultation



Regional Water Resources Plan (RWRP) South West Region

UISCE
EIREANN : IRISH
WATER

The plan will set out how we can **balance the amount of drinking water we can supply with the demand for water that is needed over the short, medium and long term.**

316 million litres
a day supplied

Population growth
of **33%** from
2019 to 2044

45,000
businesses
served

19% individual
ground water
sources

66.3% agriculture
1.6% urban area
20% Natural Habitat

594,000
water supply
customers

174 Water
Supply
Sources

227 Water
Treatment
Plants

Legend

- New WTP
- Upgrade WTP (capacity and quality)
- Upgrade WTP (quality only)
- Existing Trunk Mains
- New Mains
- Cross Study Area Transfer

Key Positive Outcomes of the RWRP South West

Reducing leakage to 23% of regional demand through pressure management, active leakage control, find and fix and asset replacement.

We will **improve the level of service** provided to all customers in the Region for all-weather events significantly reducing the risk of outages and water restrictions.

93% of customers in the region will obtain the water from **an interconnected supply**

Upgrades to 137 existing water treatment plants in terms of size and barrier performance.

We will provide **17 new WTPs**

We will **decommission 90 WTPs**

Our three pillar approach will ensure we have a safe, secure, reliable and sustainable drinking water supply for everyone

Lose Less



Reduce
leakage

Use Less



Improve water
efficiency

Supply Smarter



Improve
infrastructure

Introduction

The National Water Resources Plan (NWRP) is Irish Water's 25-year strategic plan for the public water supply in Ireland.

The NWRP allows us to plan for our water supplies in a consistent way and to transform the public water supply in Ireland over the next 25 years. It allows us to identify the needs within our existing supplies, and to consider the challenges and opportunities that will arise. These include, changing policy and legislation, climate change, environmental sustainability, growth and economic development.

Within the NWRP we will assess all of the 539 individual supplies that form the national public water supply and develop a clear approach to address the current and future needs across these supplies.

What is the objective of the National Water Resources Plan?

The objective of the NWRP is to meet our customer and communities needs over the short, medium, and long term, by ensuring safe, secure, sustainable, and reliable water supplies.



What is happening now?

As this is the first NWRP, the preparation of the plan has been divided into two distinct phases, the combination of which will become the final NWRP.

In Phase 1 of the Framework Plan, we set the standards we would like our supplies to achieve and processes we will follow to address needs across our supplies. Following public consultation in early 2021, the Framework Plan is now complete and can be found at www.water.ie/nwrp

In Phase 2 of the NWRP, we summarise the needs across the 539 individual water supplies and identify the solutions to address these needs. Due to the large number of supplies in Ireland, we will deliver Phase 2 as four Regional Water Resources Plans:

- Regional Water Resources Plan: North West
- Regional Water Resources Plan: South West
- Regional Water Resources Plan: South East
- Regional Water Resources Plan: Eastern and Midlands

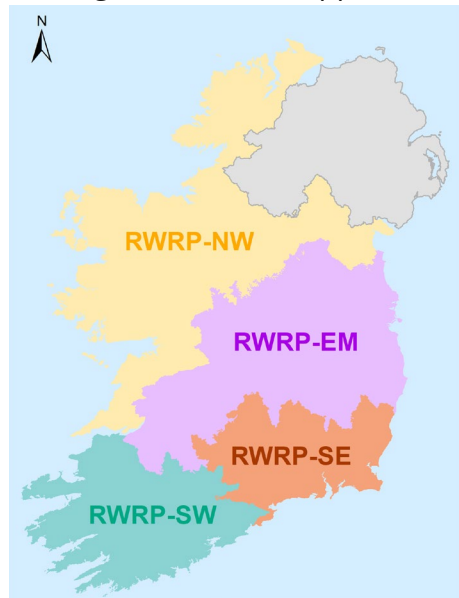


Figure 1. Regional Areas of the NWRP

Each of the four draft RWRPs and associated environmental reports will have their own public consultation phases, which will be carried out over the course of 2021/2022.

As part of each Regional Plan we will:

- Apply the Framework methodology to the water supplies in the region
- Develop regional solutions for all water supplies within these areas

The first Plan to be consulted on was the draft Regional Water Resources Plan: Eastern and Midlands (RWRP-EM). A thirteen-week statutory consultation on the draft RWRP-EM and associated SEA Environmental Report and Natura Impact Statement took place from the 14 December 2021 to 14 March 2022. Irish Water subsequently facilitated two extensions to this statutory public consultation at the request of key stakeholders, with consultation finally closing on Friday 08 April 2022.

Following that process, all submissions will be taken into consideration and responses to the issues raised will be summarised in a Post Consultation Report, which will be published in Summer 2022.

The second Plan to be consulted on is the Regional Water Resources Plan: South West.

At the end of Phase 2 the outcome of the four plans will be combined and prioritised collectively.



Regional Water Resources Plan South West Region

The below map outlines the area which is covered by the RWRP-SW. A full list of townlands, towns, settlements, and counties included in the RWRP-SW can be found <https://www.water.ie/projects/strategic-plans/national-water-resources/rwrp/south-west/>

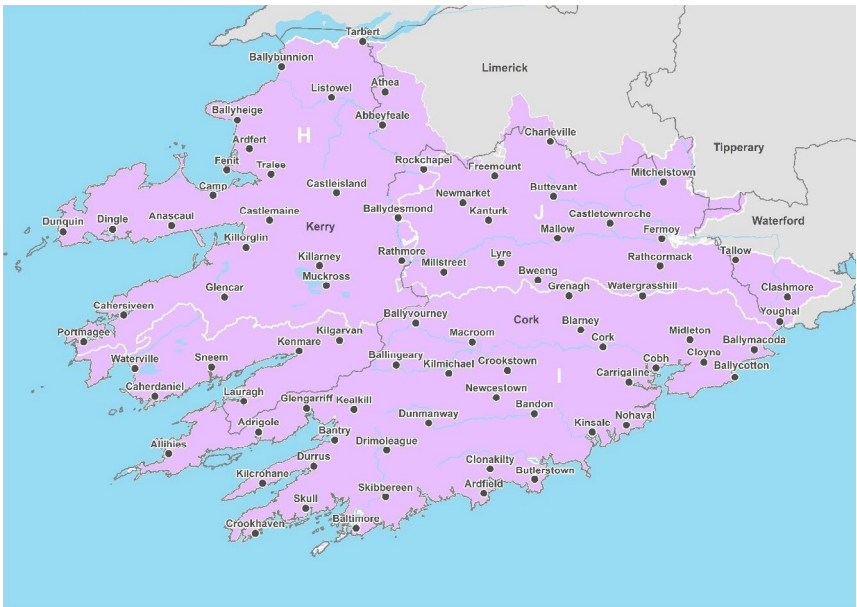


Figure 2. Key towns of the South West region

What is the South West Region?

The South West Region includes five (5) counties: Cork, Kerry and parts of counties Limerick, Tipperary and Waterford. It covers approximately 13,000 square kilometres (representing about 20% of the Republic of Ireland) and extends from the southern tip of the country, from the Iveragh Peninsula in the

south west of County Kerry, north to the Shannon Estuary, and south east passing through county Cork and into county Waterford to the Celtic Sea at Youghal.

Irish Water supplies around 316 million litres of water per day to a population of 594,400 people and 45,000 businesses in the South West Region. This represents more than 18% of our total supply nationally. The South West Region has a population of 594,400, 14% of the national population.

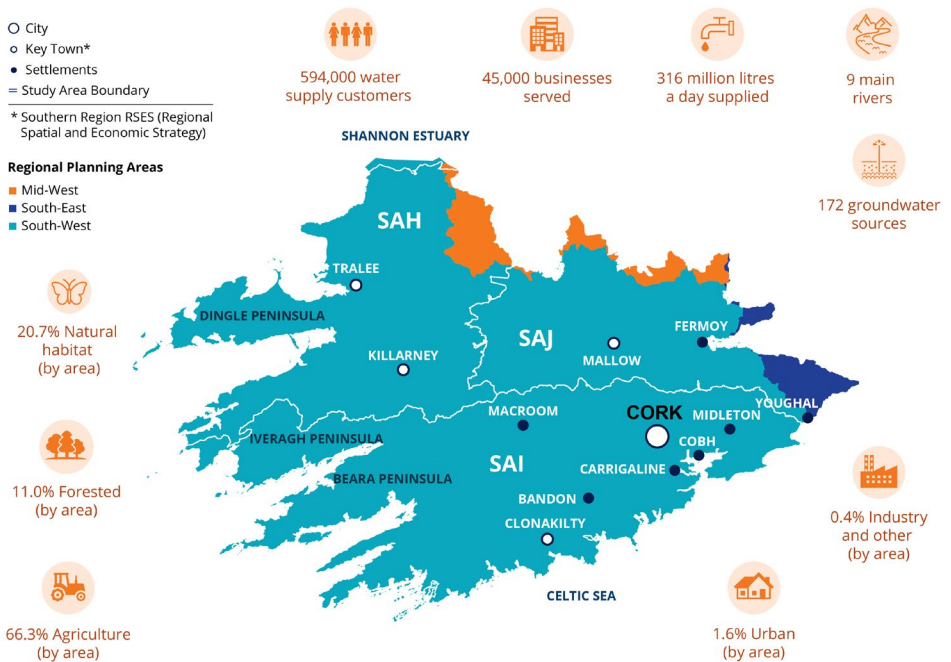


Figure 3. Key characteristics of the South West Region

What are the issues in the Region?

In the South West Region there are 227 Water Treatment Plants that feed water into 174 stand-alone water supplies known as water resources zones (WRZs). These WRZs provide water to all the cities, towns, villages, and rural properties in the region that are connected to the public water supply.

When we view these supplies using the Irish Water risk factors, we set out in the Framework plan, we have identified the following needs which must be addressed as part of the draft RWRP-SW:

- 52% of the WRZs are in supply Deficit, which means the volume of water available from our supply system is not sufficient to meet the full unrestricted demand in a normal year.
- 158 of the 227 Water Treatment Plants need some form of investment to reduce risk to water quality.
- Levels of service across the South West Region are below the standard we are aiming to achieve. Until we reach our target level of service, there is a higher risk of interruptions to supply.
- Some of our water abstractions may be unsustainable.

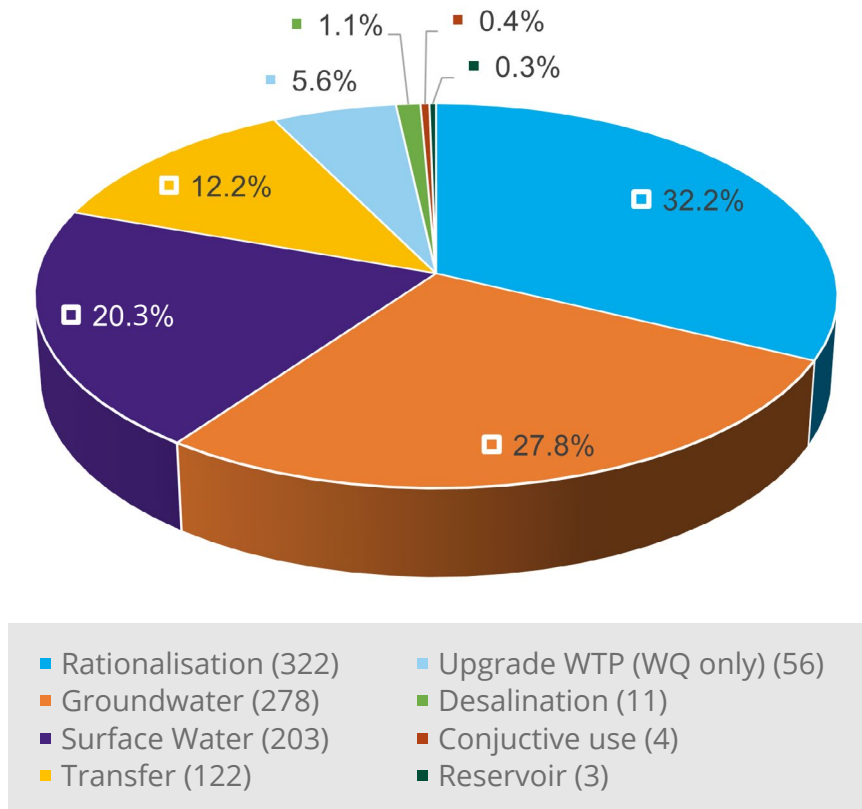
How do we review this in our draft regional plan?



Within the Plan we identify solutions to address these needs, under three pillars, Use Less (water conservation), Lose Less (leakage reduction) and Supply Smarter (sustainable water supplies).

As part of the draft RWRP-SW we reviewed 1,676 unconstrained options and developed 999 feasible options to address the needs we identified in the Region.

These feasible options included an extensive list of option types, including, groundwater and surface water sources, reservoirs, and water transfers.



We then assessed these to develop a preferred approach for each of the water supplies.

What is the outcome of our plan?

The development of the draft RWRP-SW has for the first time allowed Irish Water to collectively assess needs across all of the 174 water supplies in the region, in terms of quality, quantity, reliability and sustainability. The regional plan allows us to consider local options to resolve identified needs within individual supplies and also larger regional options that can address needs across multiple supplies.

The preferred approach for the region, once delivered, involves:

- Reduction of the number of WRZs in the South West Region from 174 to 92.
- Development of larger interconnected WRZs for the urban areas in the region.
- Development of 17 new water treatment plants (WTPs).
- Eventual decommissioning of 90 WTPs.
- Upgrades to 137 existing water treatment plants in terms of size and barrier performance.
- Interconnecting supplies via 644 kilometres of trunk mains.
- Reducing leakage to 23% of regional demand through pressure management, active leakage control and targeted asset replacement.

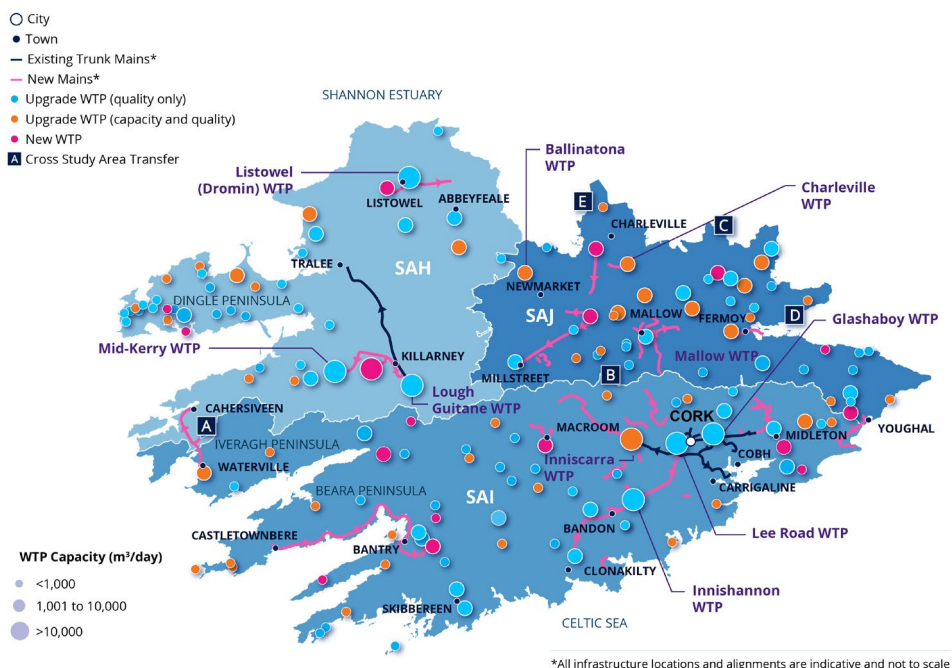


Figure 4. Regional Preferred Approach

What does this mean for consumers in the region?

The preferred approach will provide the best overall outcome for the region, particularly in relation to environmental, ecology and resilience outcomes. This will result in:

- Improved performance across all of the water supplies in terms of quality and quantity.
- Strategic transformation from the existing fragmented supply to a more resilient and sustainable interconnected supply. All 92 of the remaining/new water resources zones in the South West Region will be able to provide improved reliability and meet a minimum 1 in 50 Level of Service during normal, dry, drought and winter conditions.

- All Water Resource Zones will be resilient with improved environmental sustainability.
- Customer benefits in terms of increased reliability and reduced occurrence of outages across our supplies.
- Customer benefits in terms of reduced water quality risk and the instances of boil water notices.
- Improved resilience, with 93% of the population supplied via sources with impounding storage or aquifer storage that will allow us to better manage seasonal variation in water availability and drought events.
- Sources that are more environmentally sustainable and allow us to adapt to climate change and align with the requirements of the Water Framework Directive and Habitats Directive.
- Improved operational control across our water supplies, and ability to react to adverse events.
- Improved efficiency of our distribution networks in terms of leakage, pressure and strategic storage.
- Ability to facilitate growth and economic development.



How can I get involved?

Irish Water are now seeking feedback on the public consultation for the draft RWRP: South West and associated SEA Environmental Report and Natura Impact Statement.

A 11.5-week statutory public consultation will run from the 1 June 2022 to 23 August 2022 during which time the draft RWRP South West and associated environmental reports can be viewed and downloaded at <https://www.water.ie/projects/strategic-plans/national-water-resources/rwrp/south-west/> or at your local authority's planning office or County Library (depending on the local authority) during their normal opening hours.

This is your opportunity to feed into the process of how we identify the issues and determine what the opportunities are for water supply in your area. We are also seeking your feedback on how we will develop options to address any problems identified, before applying them to specific areas.

All submissions will be taken into consideration and responses to the issues raised will be summarised in a Post Consultation Report, which will be published on <https://www.water.ie/projects/strategic-plans/national-water-resources/rwrp/south-west/>

Individual submissions will be reported anonymously and feedback from organisations will be attributed to them.

Feedback received outside the scope of the draft RWRP-SW and the associated environmental reports will not be considered as part of this public consultation process and will not be reported on. Any feedback in relation to in flight Irish Water projects, or in reference to any other area of the Irish

Water business should be sent directly to those project teams, unless applicable to how they are included in the RWRP-SW. Information on Irish Water projects and contact details can be found on www.water.ie

In line with the General Data Protection Regulations (GDPR) effective from 25 May 2018, Irish Water's updated Privacy Notice, is available to view online at www.water.ie/privacy-notice

Have your say

Any member of the public wishing to make a submission can do so by email or post by **23 August 2022** as follows:

Email: **nwrp@water.ie**
Post: **National Water Resources Plan,
Irish Water, P.O. Box 13216,
Glenageary, Co. Dublin**
Freephone: **1800 46 36 76**

A dedicated helpline is available for anyone who would like to discuss any aspect of the consultation prior to making a submission. Freephone: 1800 46 36 76

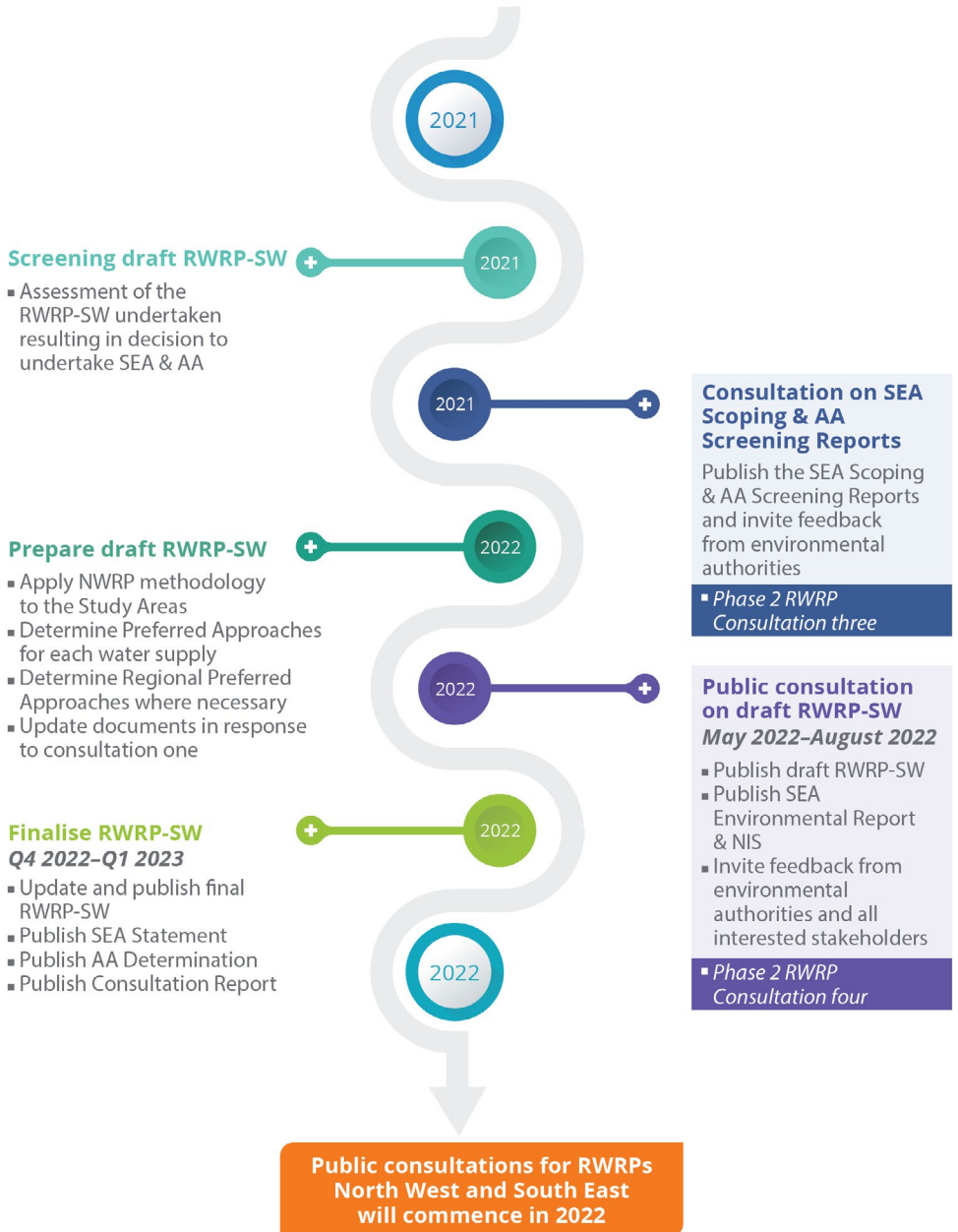
Scope of the Consultation Questions

In order to guide members of the public or organisations in making a submission, Irish Water is inviting submissions on the following questions. However, this is just an aide and all relevant submissions received in response to the consultation will be considered:

1. Within the South West Region we consider 174 water supplies (Water Resource Zones) represented across 3 Study Areas. Do you have any comments on the Study Areas?
2. In Section 2 of the draft RWRP-SW we set out information on the current situation in the Region in respect of the population growth and economic development and how we considered this in our water resource planning approach. Do you have any comments on this?
3. Section 3 of the draft RWRP-SW and each of the Study Area Technical Reports (Appendices 1-3) outline the Need in terms of water quality, quantity, sustainability and resilience across the region and in each of the Study Areas. Do you have any comment on the Need (Deficit)?
4. Section 4 and Section 7 of the draft RWRP-SW, and the Study Area Technical Reports (Appendices 1-3), set out solutions we can undertake to address some of these Needs in the interim, while we develop the Preferred Approaches. Do you have you any comments on this?

5. Section 6 and the Study Area Technical Reports (Appendices 1-3) of the draft RWRP-SW summarise our process for developing options to address the Needs in the SW Region. Do you have any comments on this process?
6. Section 7 sets out how we identify our Preferred Approach to addressing the Need at WRZ and Study Area level. The Study Area Technical Reports (Appendices 1-3) and the Study Area Environmental Reviews will set out how the Preferred Approach has been identified in more detail. Have you any feedback on this?
7. The draft RWRP-SW looks at a range of solutions to meet the need in a WRZ or Study Area. These solutions are not limited by distance, therefore some solutions for the WRZ or Study Area will involve interconnections across multiple supply systems. Have you any comments on the Regional Preferred Approach?
8. Do you have any comments on the Strategic Environmental Assessment (SEA) Environmental Report and Natura Impact Statement (NIS) which accompany the draft RWRP-SW?
9. We have produced a RWRP Consultation Roadmap. Do you have any comments on this?
10. How would you like Irish Water to communicate with you as the RWRPs progress?

RWRP South West Public Consultation Roadmap



Next Steps

1. Once the public consultation period has concluded, all feedback received during public consultation will be reviewed by the National Water Resource Plan team and all relevant feedback will be incorporated into the Post Consultation Report and, where appropriate, incorporated into the final Regional Water Resources Plan South West.
2. Consultation on the Strategic Environmental Assessment (SEA) Scoping Report for the third Regional Water Resource Plan: North West (RWRP-NW) will take place in May 2022. The SEA Scoping Report will be provided to specified environmental authorities, for the purposes of initial, non-statutory consultation on the scoping of the SEA for the North West Region. Following this process, the feedback obtained will be considered and reflected in the documents published for public consultation in 2022 comprising the draft RWRP-NW and associated SEA Environmental Report and Natura Impact Statement.
3. The remaining Regional Water Resource Plan: South East, will be consulted on in the same way, comprising both non-statutory screening and scoping consultation with environmental authorities, followed by statutory public consultations in 2022.
4. The submissions and observations received from the public consultation outlined above will be taken into consideration before adopting all four RWRPs. Once the complete NWRP has been finalised, comprising the Framework Plan and the four Regional Water Resources Plans, they will be treated as a unified single plan.

Contact details

To make a submission on the RWRP South West or for further information please contact:

Email: **nwrp@water.ie**

Web: **www.water.ie/nwrp**

Freephone: **1800 46 36 76**

**National Water Resources Plan,
Irish Water,
P.O Box 13216,
Glenageary, Co. Dublin**

General Irish Water queries

9am-5.30pm, Mon-Fri

Telephone: **Callsave 1800 278 278**

Minicom: **LoCall 1890 378 378** (for hearing impaired customers with their own minicom equipment).

Please note that the rates charged for 1800 (Callsave) and 1890 (LoCall) numbers may vary across different service providers. Calls made using mobiles may be more expensive.

This publication is available in Braille, on CD and in large text format on request by calling **1800 278 278**.

ervia

Aurora
TELECOM



Gas
Networks
Ireland

UISCE
IRISH
WATER